



Development Proposal

Oak Park Station

September 3,
2015

FitzGerald

LENNAR
MULTIFAMILY COMMUNITIES



CLARK STREET
Development

Modular brick or approved equal	manufactured by Yankee Hill	color: New England	
Cement fiber board or approved equal	manufactured by James Hardi	color: Cobble Stone	finish: smooth
Cast stone	manufactured by Rockcast	color: Slate	
Stucco	manufactured by Sto	color: Champagne	finish Fine Sand
Vinyl windows		color: Dark bronze	
Unit louvers		color: Sherwin Williams Grizzle Gray and Alpaca	
Metal panel		color: Galactic Ash (charcoal)	
Glass or approved equal	manufactured by Viracon	color: VE1-48	
Garage panel	perforate metal	color: Sherwin Williams Aleution, Bracing Blue and Distance	

(5) List of Materials



(11) South Building Garage Screen
Looking Northeast (1st scheme)



(11) South Building Garage Screen
Looking Northeast (2nd scheme)



(11) South Building Garage Screen
Looking Northeast (current scheme)



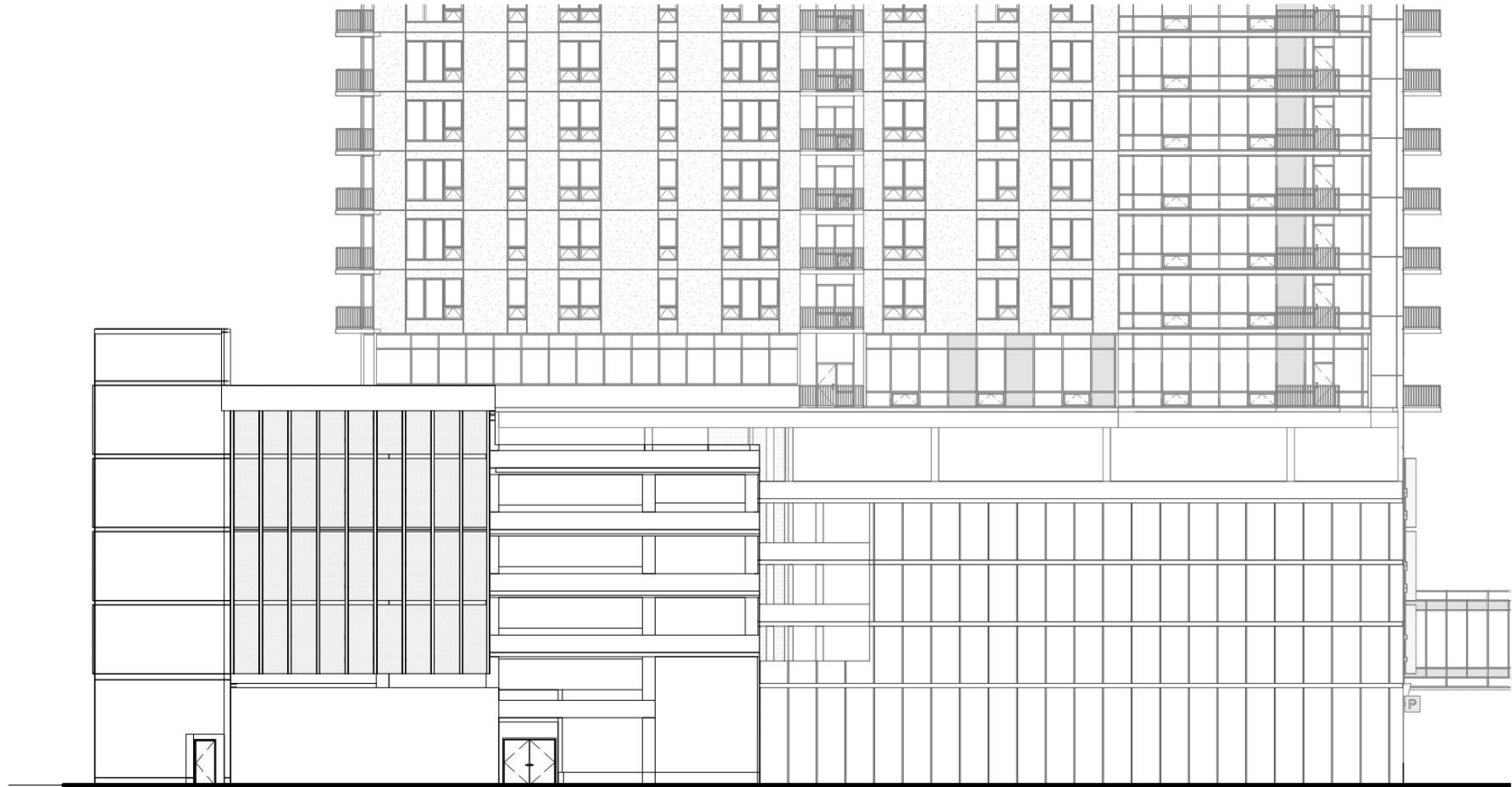
(11) South Building Garage Screen
Looking Southeast (current scheme)



(11) South Building Garage Screen
Looking Northwest (current scheme)



(11) South Building Garage Screen
East Elevation (before)



(11) South Building Garage Screen
East Elevation (current)



(11) Pedestrian Bridge
Looking North (before)



(11) Pedestrian Bridge
Looking North (current)



(11) Pedestrian Bridge
Looking East (before)



(11) Pedestrian Bridge
Looking East (current)



(11) Pedestrian Bridge
Looking West (before)



(11) Pedestrian Bridge
Looking East (current)



(11) North Building Cornice
Lake St. Elevation (before)



(11) North Building Cornice
Lake St. Elevation (current)



(11) North Building Cornice
Westgate St. Elevation (before)



(11) North Building Cornice
Westgate St. Elevation (current)



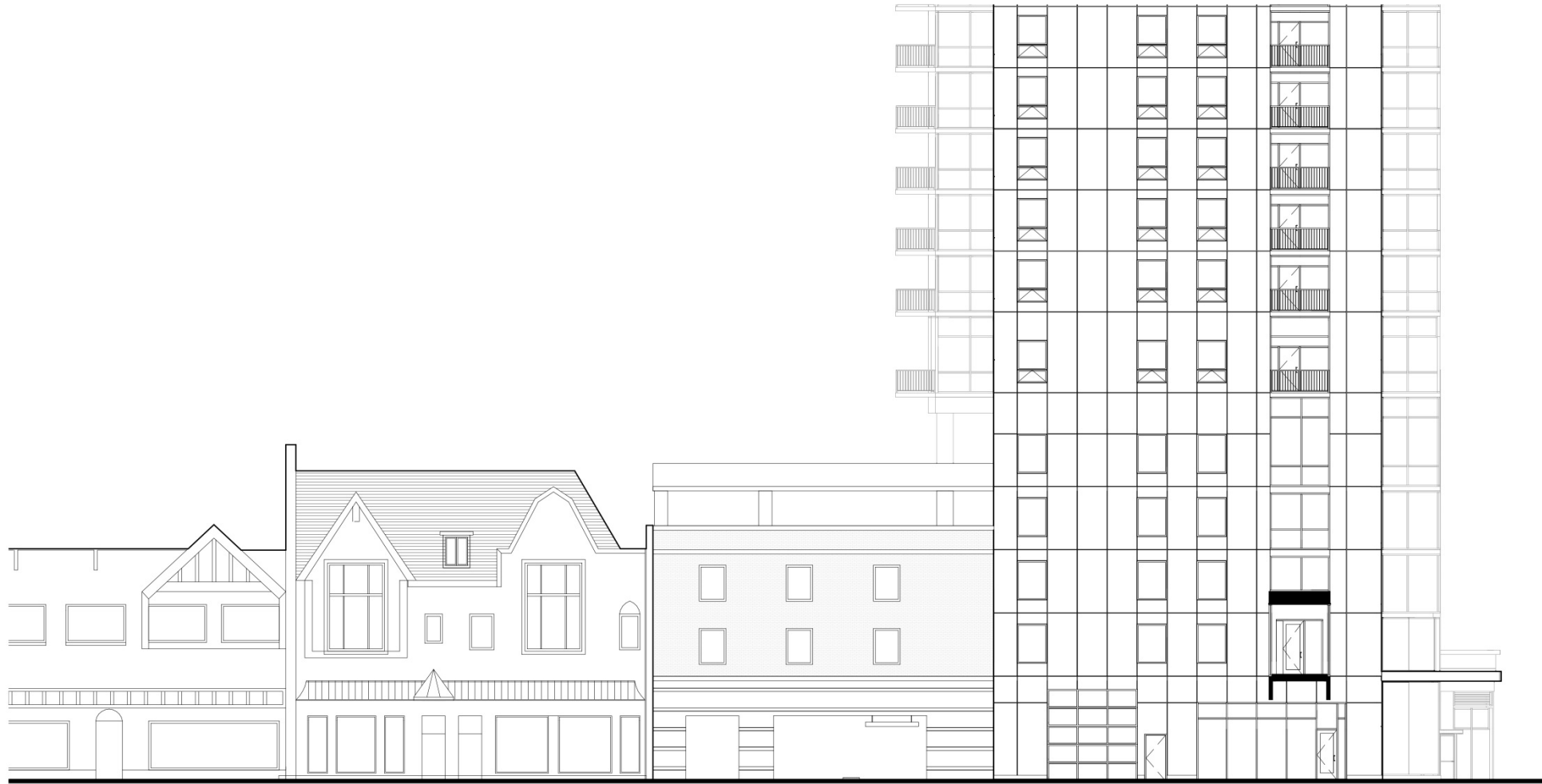
(11) North Building Cornice
View Looking West (before)



(11) North Building Cornice
View Looking West (before)



(14) Westgate Elevation
South Building (before)



(14) Westgate Elevation
South Building (before)



(14) Westgate Elevation
South Building (current)



(14) Westgate Elevation
South Building (current)



Sto Corp.
 3600 Camp Creek Parkway
 Building 1400, Suite 120
 Atlanta, GA 30331
 Toll Free: 1-800-221-2397
 Fax: 404-346-3119
 www.stocorp.com

July 24, 2015

Istvan Walker
 Fitzgerald Associates Architects
 912 West Lake Street
 Chicago, IL 60607

RE: StoTherm® ci Wall System use in High Rise Construction

Mr. Walker:

This is intended to indicate that the StoTherm® ci Wall System has demonstrated proven performance for use on high rise construction in various climatic regions that vary from Canada to Florida which also includes coastal regions subject to hurricane design criteria. Below are a few photos of reference projects located throughout North America.



Regards,

Jeff Diqui

Jeff Diqui
 Building Enclosure Specialist
 Architectural Engineer
 Sto Corp.

(15) Stucco Application



Conclusion





FitzGerald

LENNAR
MULTIFAMILY COMMUNITIES


CLARK STREET
Development